



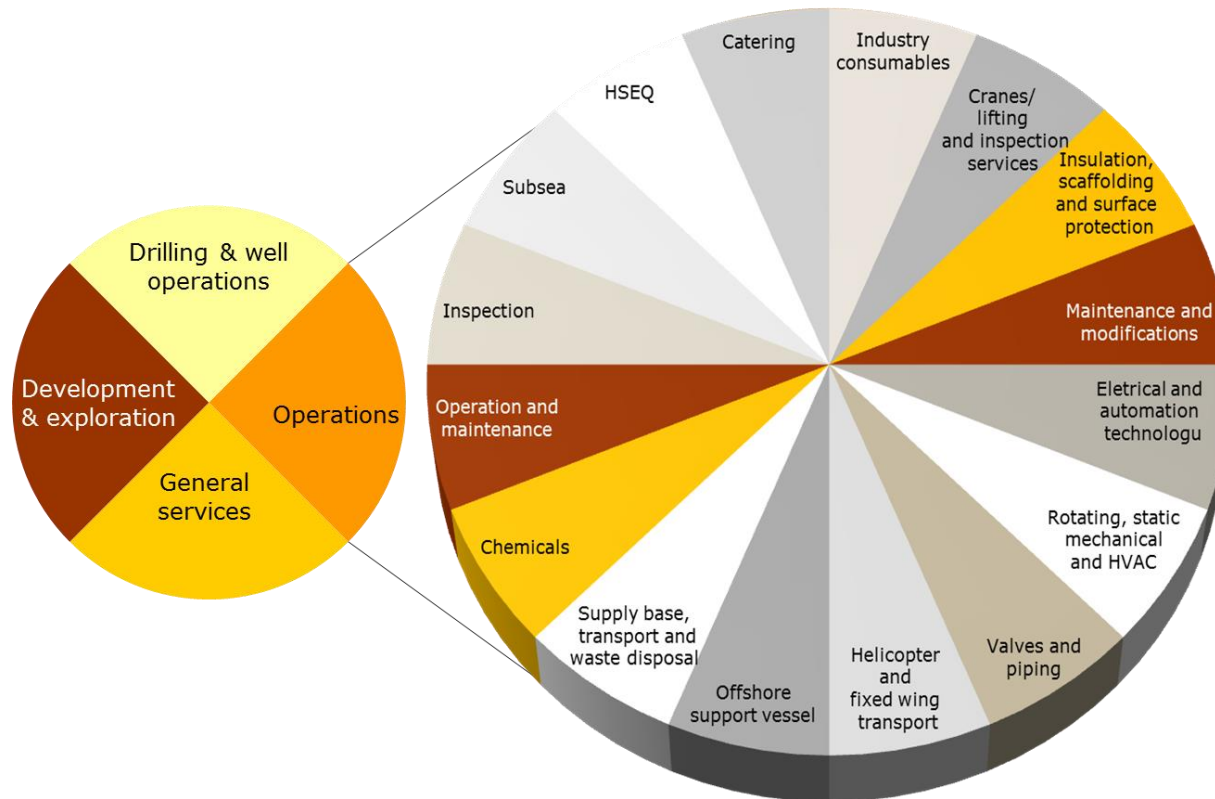
Workshop -Kontrakter i Driftsfase

Øyvind Naustvik, District Operation Hammerfest
12. Mars 2015

www.eninorge.com

Major categories of materials and services for Operations

- A contract strategy was developed for 16 categories of materials and services as illustrated in the chart below.



Noen viktige elementer som ble tatt i betraktning under kategori utviklingen



Utføre selv
eller kjøpe



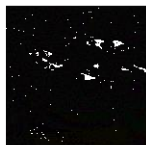
Lokale avtaler



Rammeavtaler



Bundling



Single source



Globale
avtaler

norge



Contracts awarded 1 of 2

Service contracts

- Sea Water Lift Pump and Centrifugal Pumps
- Mechanical Seals
- Positive Displacement pump
- Screw pumps (seawater lift, cargo etc)
- ISO
- Operation and maintenance support
- Maintenance and Modification
- Oil spill and co training operation and emergency towing course
- Weather Forecast Service
- Loose Fireman`s Equipment
- Personnel Protection Equipment
- Emission Factor for Flaring on Goliat
- Gas measuring equipment
- Deck Crane Service Contract
- Cranes/lifting & Inspection Services
- Inspection Services
- Valve Management Service
- Pipeline Pigging Process Services
- Catering Services
- Medical equipment
- Co-training first aid team simulator training
- Crane simulator training

Contracts awarded 2 of 2

Service contracts

- Analysis and Environmental Service
- Occupational Health incl. Duty Doctor in Hammerfest incl. Pharmacy
- Laboratory services
- Evacuation Chutes incl. life saving appliances
- Free fall Lifeboat
- Overhaul & Repair of Electrical Motor, Heaters and Generators
- Industrial Consumables
- Hose Management
- Goliat Production Chemicals & Service

Contracts to be awarded

Service contracts

- Fresh Water Generator
- Watertight Sliding Doors
- Services for Lube Oil, Grease, Hydraulic Oil and Marine Oil
- Waste Management
- Personnel Protection Equipment
- Consumption Gas Delivery Contract
- Sewage Treatment Package Service Contract
- Cable Emergency Contract

Local ripple effect

- Some examples of ripple effect from local establishment and staffing that has directly resulted in local personnel and services from the following Companies:
 - Norisol
 - Nordkapp Maritime Fagskole
 - OssNor
 - Apply Sørco (HIS)
 - ESS
 - Atea
 - Nokas
 - Hammerfest Energi
 - Tools
 - Mento

In addition to the Operational Contracts several supporting Contracts are established:

- Polarbase
- Logistic
- Drilling
- Helicopter
- BAR Eiendom,

Thank you

